

TECHNICAL CATALOGUE

TABLE OF CONTENTS

01

INTRODUCTION

Introduction	3
Introduction	4
It is all about CAR LA	5
Technologies & Materials for CAR LA	6
Flow Chart from RFQ to mass production	7
Global recognition	8

APPLICATIONS

	9
Applications in car interior	10
Focus on ultra-light, sustainable materials	11
Explore CAR LA laminates	12

02

03

TECHNICAL SPECIFICATIONS

	13
A - face materials laminates	15
PU foam thermoadhesive glue laminates	17
PU foam laminates with scrim, nonwoven, watte	19
PU foam laminates with non elastic scrim	21
Foam air permeable/reticulated with stabiliser thermoadhesive and LOOP + HOOK	23
PP foam + A-FACE Dekor	25
Thermoadhesive FORIFIX laminates Recycled laminates	27
BIO FOAM LAMINATES	29
THERMOFORM laminates and parts	31
MONO PES laminates thermoadhesive	33
Mesh spacer laminates – mono	35

RECOGNITION AND RELIABILITY

	37
Sustainability	38
Certificates	39
References	39

04



01.

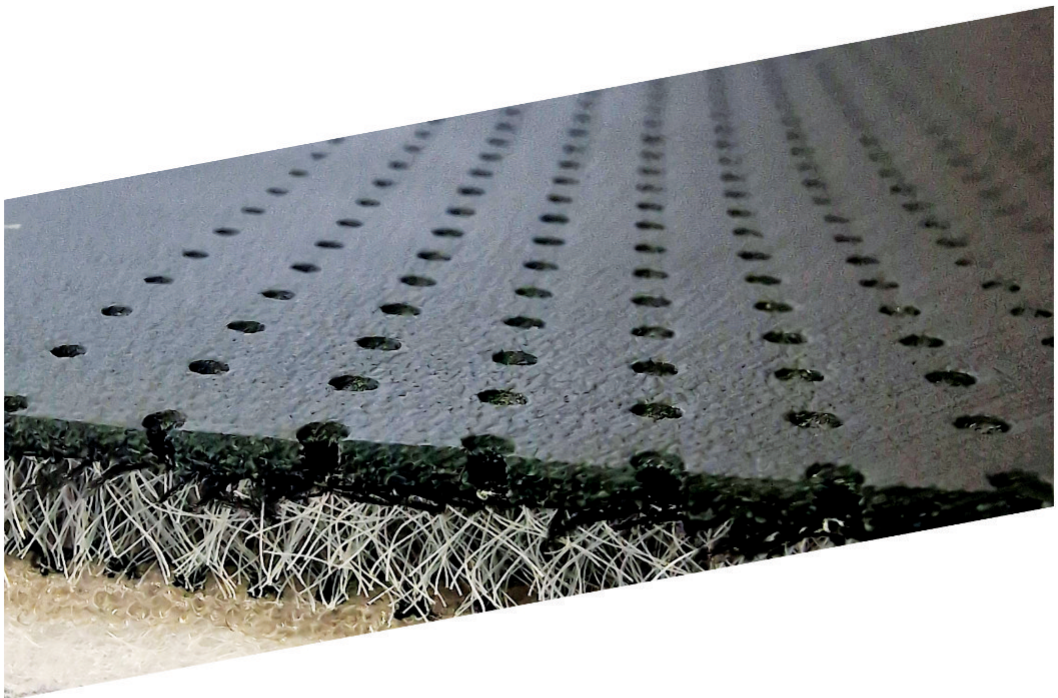
INTRODUCTION

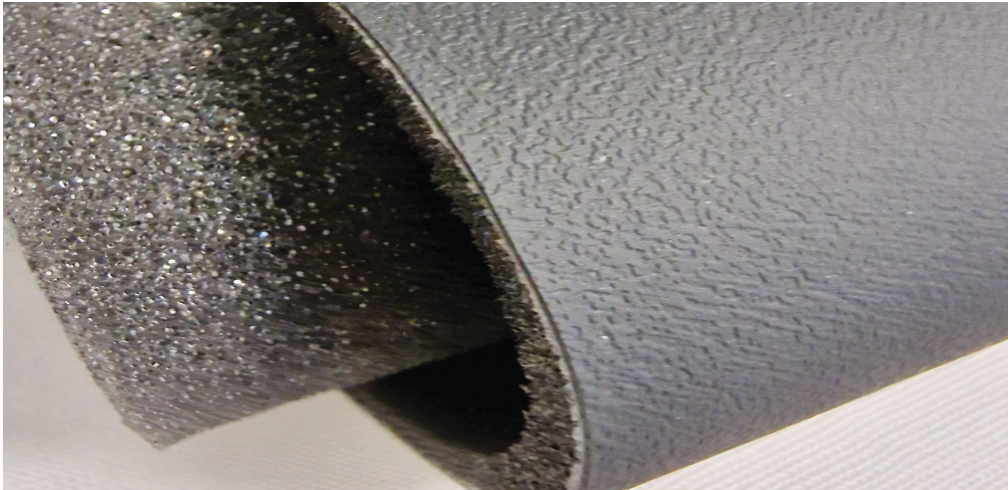
INTRODUCTION

FORI Group is an overarching organization, integrating several business systems and activities: production, trade and engineering.

Our trade mark **CAR LA** offer new bussiness opportunities and international co-operation, while the Group's key objectives are strategic and capital ties within the Group as well as efficient economy and organisation.

Our technical textile laminates are sold worldwide under name CAR LA. Our complete products range assures that we can offer laminates for various car interior application and designs that meet their high needs and demands.





IT IS ALL ABOUT CAR LA

CAR LA materials include foams low emission, clima foams, bio based foams, foams for thermo forming covers, nonwovens, woven fabrics, A-face layer as fabric, bio based vinyls, Alcantara, backing materials as knitted scrims, web glue films, powder glue , mesh 3D spacers, sustainable MONO composites PES, recycled materials

We are expert for lamination with more than 65 years experiences.

CARLA compositions:

FORI foams,

FORI knitted scrims

FORI nonwovens

FORI mesh spacer

FORI glues

FORI fabrics

FORIFIX

TECHNOLOGIES & MATERIALS FOR CAR LA

INPUT:

Lamination of different materials such as foams, A-face materials vinyls, Dinamica, Alcantara, fabrics, nonwovens, knitted scrims, spacers, fleeces, glues, etc.

TECHNOLOGIES:

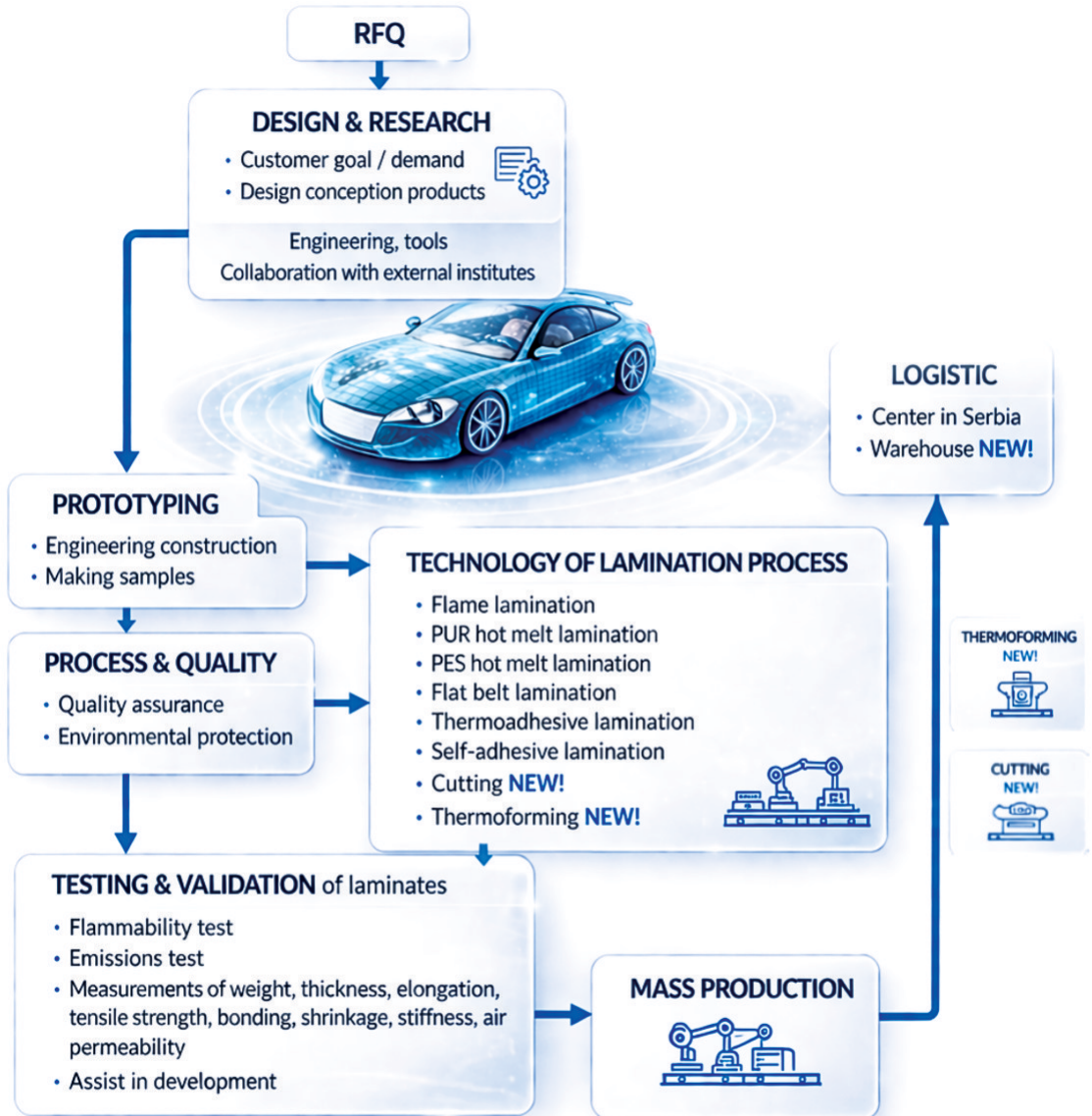
Flame lamination
PUR hot melt lamination
PES hot melt lamination, sustainable
Flat belt lamination
Thermoadhesive lamination
Selfadhesive lamination
Cutting New
Thermoforming New

OUTPUT:

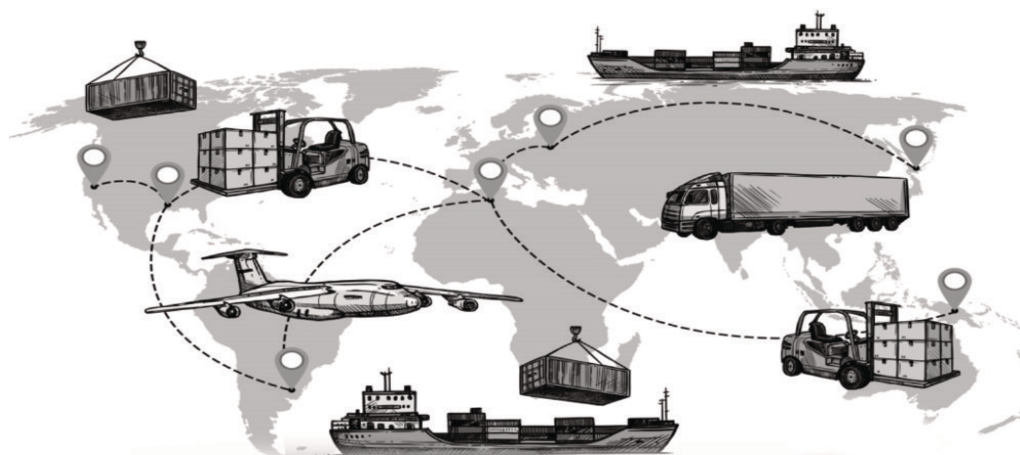
CAR LA laminates in rolls, in cut parts
Packaging
Compressing the rolls



FLOW CHART FROM RFQ TO MASS PRODUCTION



GLOBAL RECOGNITION



FORI Group exports to more than 60 countries all over the world

4 PRODUCTS GROUPS:



Laminated foams and other materials for automotive, railway and aircraft industry



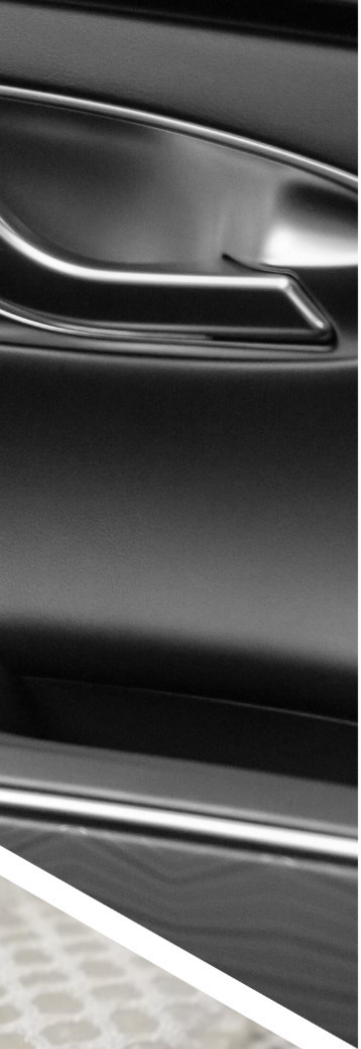
Tapes for cable industry



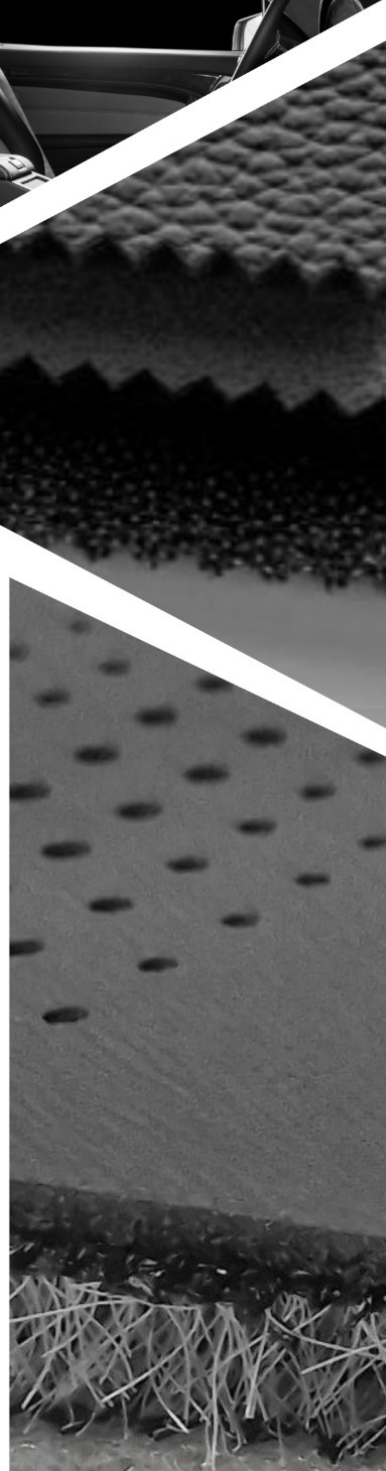
Laminates, products for living, upholstery: mattresses, pillows, children's seats, absorbent pads



Laminates for building constructions industry, isolations



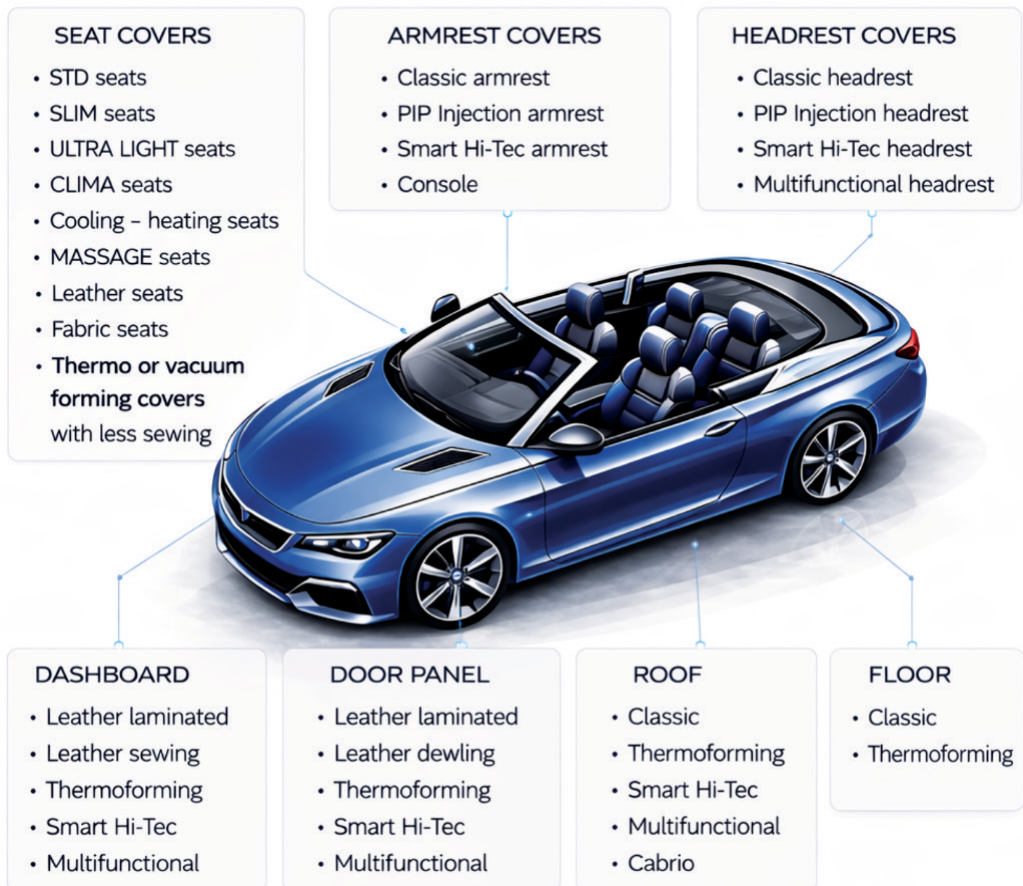
02. APPLICATIONS



APPLICATIONS IN CAR INTERIOR

— for different —
CAR INTERIOR
APPLICATIONS as:

CAR LA laminates provides advanced laminated materials designed for the next generation of vehicle interiors. Our solutions support a wide range of applications, from seating systems to interior trim components.



FOCUS ON ULTRA-LIGHT, SUSTAINABLE MATERIALS

FELTS, NONWOVENS

Are sustainable backing material in range 80-1000 g/m² / PES / soft touch / hard touch / calandered / bi-co fibers.
Perforated / thermoadhesive / low emission / recycled.

KNITTED SCRIMS

PA, PES, warp, circular, recycled fibers, mono-bi directional, loop.

NONWOVENS

PES, PP: needle punched / spunlace / thermobonded / waterjet/ different colours.

ELONGATION STOPPER DIMENSION STABILIZER -FORIFIX UNDER

Elastic leather, to eliminate or reduce wrinkles and other topic in leather behavior.

HOOK/LOOP

For concave, convex seat covers, for stick on seat body, decrease sewing.

FOAMS

PUR:

20-120 kg/m³ /PUR, flexible, open cells / reticulated- high air permeable / barrier PIP / small cells extra soft / low emission / foam for thermoforming /thermoadhesive foams.

BIO PUR foams, with 32% bio content.

PP: 45-100 kg/m³ cross linked.

SPACER MESH 3D

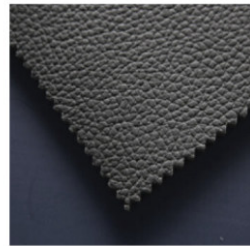
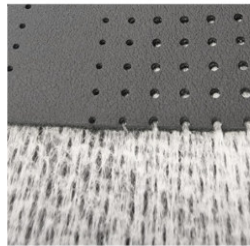
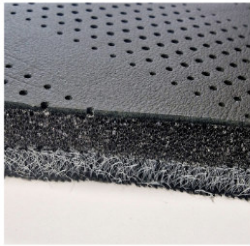
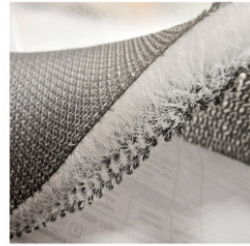
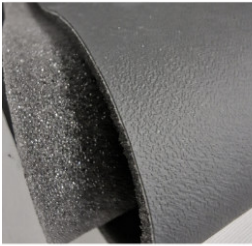
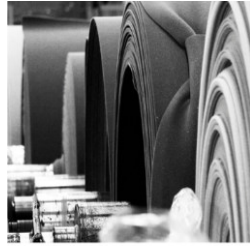
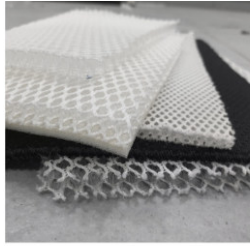
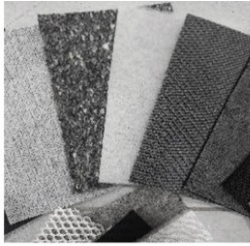
PES: 100-800 g/m²; 3mm-15mm different hardness, structures, colours.

THERMO GLUES

Backing material for leather lamination in range 8-90 g/m² different composition as CoPA, CoPES, PES, EVA, PUR, poliolefines.

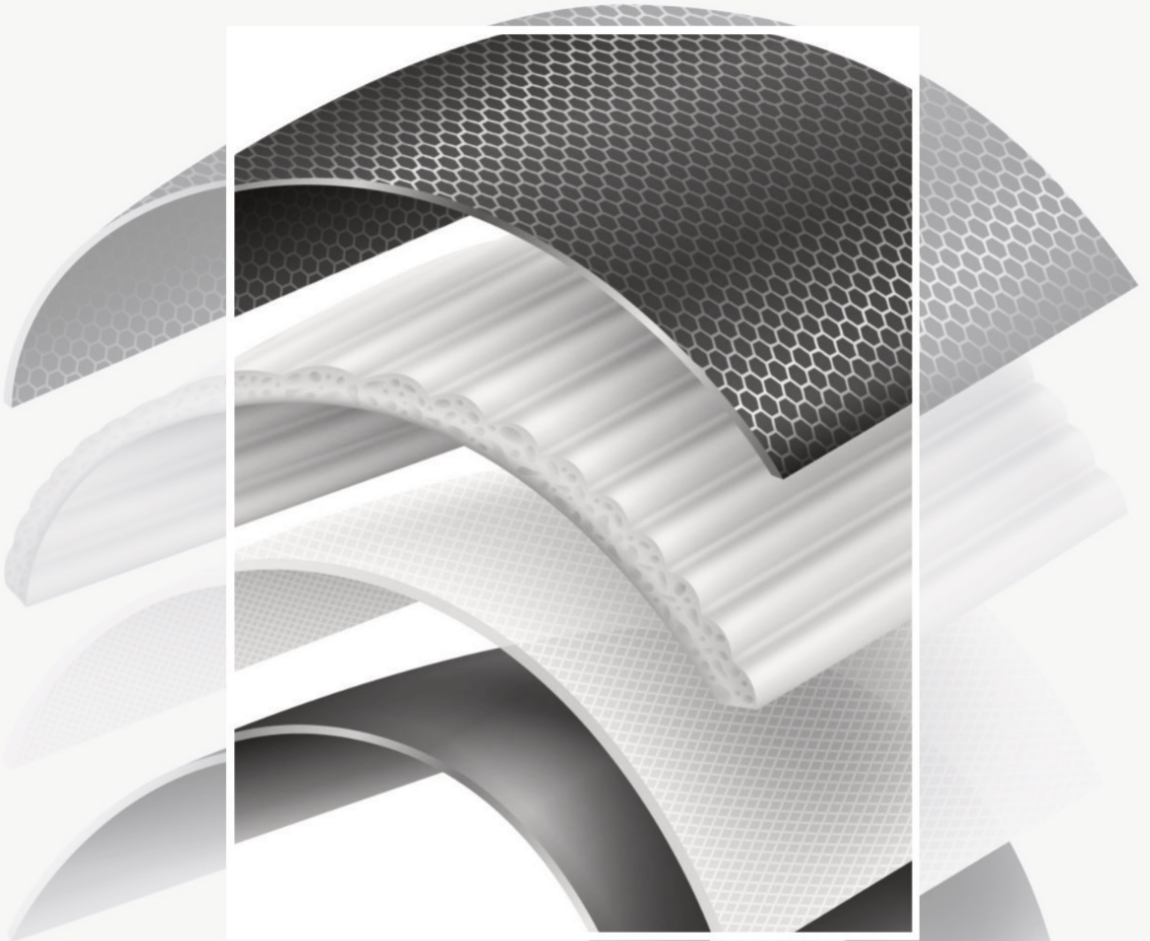
Glue in different distribution as Web film / powder glue / glue dot / glue folie / glue coating / different melting ranges, different viscosity MFI.

EXPLORE CAR LA LAMINATES





03.
TECHNICAL
SPECIFICATION



**“ADVANCED MATERIALS.
ASSURED QUALITY”.**

Technical Specification

Product name:	CAR LA A-FACE LAMINATES
PN CAR LA code:	
Description:	A-FACE material laminates Vinyls, Fabrics, Alcantara, Dinamica, Suede.. with foam and scrim / or barrier version
Application:	For seat cover (STD,clima, massage) / door panel / armrest console / dashboard, trunk, roof
OEM:	All OEMs

PROPERTY	Standard/ Metod	Value with tolerances	Unit
1.0. Product			
1.1. Thickness	ISO 5084	2,0-20,0	mm
1.2. Width	ISO 22198	1000-1800	mm
1.3. Flammability	FMVSS 302	≤ 100	mm/min
1.4. Adhesion	DIN 53357	Min 10	N/5cm
2. FORI PU foam low emission standard STD or high air permeable / reticulated or barrier			
2.1 Density of block	DIN EN ISO 845	31-65	kg/m ³
2.2 Compression set	ISO 1856	< 10	%
2.3 Compression stress at 40%	ISO 3386-1	3,2-12,0	kPa
2.4 Tensile strength	ISO 1798	Min 100	kPa
2.5 Elongation	ISO 1798	Min 100	%
2.6 Flammability	FMVSS 302	≤ 100	mm/min

2.7 Air permeability Very high or very low-barrier	ISO 9237 20cm ² / 25cm ² / 100 cm ² 100 / 200Pa	Min 1000 for clima version Max 100 for barrier version	l/dm ² /min l/m ² /s
2.8 Colour		Black /grey /white	
3. Fori scrim			
3.1 Weight	ISO 12127	15-100	g/m ²
3.2 Composition		PES / PA / recycled	
3.3 Type knitting		Circular / warp	
3.4 Pattern knitting		Mono / bi-directional / fishbone / atlas non-elastic	
4. A-FACE MATERIAL define by OEM			
Vinyl, Fabric, Alcantara, Dinamica, Suede...			

Technical Specification

Product name:	CAR LA PU foam thermoadhesive glue laminates low emission
PN CAR LA code:	
Description:	PU foam laminated with scrim or nonwoven and thermoadhesive powder glue
Application:	For leather lamination
OEM:	Mercedes, Porsche, Volvo..

PROPERTY	Standard/ Metod	Value with tolerances	Unit
1.0. Product			
1.1. Thickness	ISO 5084	2,0-20,0	mm
1.2. Width	ISO 22198	1000-1800	mm
1.3. Flammability	FMVSS 302, ISO 3795	≤ 100	mm/min
1.4. Adhesion	DIN 53357	Min 4	N/5cm
1.5 Tensile strength CC (air bag application)			
2. FORI PU foam low emission			
2.1 Density of the block	DIN EN ISO 845	31-65	kg/m ³
2.2 Compression set	ISO 1856	< 10	%
2.3 Compression stress at 40%	ISO 3386-1	3,2-12,0	kPa
2.4 Tensile strength	ISO 1798	Min 100	kPa

2.5 Elongation	ISO 1798	Min 100	%
2.6 Flammability CC	FMVSS 302	≤ 100	mm/min
2.7 Colour		Black /grey /white	
3. Fori scrim			
3.1 Weight	ISO 12127	15-100	g/m2
3.2 Composition		PES / PA / recycled	
3.3 Type knitting		Circular / warp	
3.4 Pattern knitting		Mono / bi-directional / fishbone / atlas non-elastic	
or			
3. Fori nonwoven			
3.1 Weight	ISO 9073	20-300	g/m2
3.2 Composition		PES / recycled	
3.3 Type		Needle punched / thermobonded / spunlace / waterjet wadding	
4. Fori thermoadhesive powder			
4.1 Glue distribution		powder	
4.2 Composition		EVA / PES / PO..	
4.3 Coating quantity	ISO 3801	15-100	g/m2
4.4 Melting range / DSC	Kofler	75-180	°C
4.5 Viscosity - MFI melt flow index		Low /medium /high	

Technical Specification

Product name:	CAR LA PU foam laminates with scrim, nonwoven, watte
PN CAR LA code:	
Description:	PU foam laminates with scrim / nonwoven / watte - plus pad
Application:	For seat cover (STD,clima, massage) , for sewing process
OEM:	All OEMs

PROPERTY	Standard/ Metod	Value with tolerances	Unit
1.0. Product			
1.1. Thickness	ISO 5084	2,0-20,0	mm
1.2. Width	ISO 22198	1000-1800	mm
1.3. Flammability	FMVSS 302, ISO 3795	≤ 100	mm/min
1.4. Adhesion	DIN 53357	Min 3	N/5cm
2. FORI PU foam low emission standard STD or high air permeable / reticulated			
2.1 Density of block	DIN EN ISO 845	31-65	kg/m ³
2.2 Compression set	ISO 1856	< 10	%
2.3 Compression stress at 40%	ISO 3386-1	3,2-5	kPa
2.4 Tensile strength	ISO 1798	Min 100	kPa
2.5 Elongation	ISO 1798	Min 100	%
2.6 Flammability	FMVSS 302	≤ 100	mm/min

2.7 Air permeability Very high or very low-barrier	ISO 9237 20cm ² / 200Pa	Min 1000	l/dm ² /min
2.8 Colour		Dark grey / grey	
3. Fori scrim			
3.1 Weight	ISO 12127	15-100	g/m ²
3.2 Composition		PES / PA / recycled	
3.3 Type knitting		Circular / warp	
3.4 Pattern knitting		Mono / bi-directional / fishbone / atlas non-elastic	
or /and			
3. Fori nonwoven needle punched felt			
3.1 Weight	ISO 12127	80-500	g/m ²
3.2 Composition		PES recycled	
or /and			
3. Fori watte nonwoven			
3.1 Weight	ISO 12127	100-300	g/m ²
3.2 Thickness	ISO 9073	5-20	mm

Technical Specification

Product name:	CAR LA PU foam laminates with non elastic scrim
PN CAR LA code:	F249,F268
Description:	PU foam laminates with non elastic scrim
Application:	For sewing heaters or similar needs
OEM:	All OEMs

PROPERTY	Standard/ Metod	Value with tolerances	Unit
1.0. Product			
1.1. Thickness	<i>ISO 5084</i>	1,7-3,3	mm
1.2. Width	<i>ISO 22198</i>	750-1800	mm
1.3. Flammability CC	<i>FMVSS 302, ISO 3795</i>	≤ 100	mm/min
1.4. Adhesion	<i>DIN 53357</i>	Min 2	N/5cm
2. FORI PU foam			
2.1 Density of block	DIN EN ISO 845	25-45	kg/m ³
2.2 Compression set	ISO 1856	< 7	%
2.3 Compression stress at 40%	ISO 3386-1	2,8-4,5	kPa
2.4 Tensile strength	ISO 1798	Min 90	kPa
2.5 Elongation	ISO 1798	Min 100	%
2.6 Flammability CC	FMVSS 302	≤ 100	mm/min

2.7 Colour		Dark grey / grey	
3. Fori non elastic scrim			
3.1 Weight	ISO 12127	40-/+5	g/m2
3.2 Composition		PES	
3.3 Type knitting		warp	
3.4 Pattern knitting		atlas	

Technical Specification

Product name:	CAR LA Foam air permeable/reticulated with stabiliser thermoadhesive and LOOP + HOOK
PN CAR LA code:	
Description:	PU foam laminates , loop scrim , stabilizer-elongation stopper with glue
Application:	For leather parts perforated , HOOK app / good behavior
OEM:	Bentley, Ferrari, Maserati..

PROPERTY	Standard/ Metod	Value with tolerances	Unit
1.0. Product			
1.1. Thickness	<i>ISO 5084</i>	2,0-10	mm
1.2. Width	<i>ISO 22198</i>	1000-1800	mm
1.3. Flammability CC	<i>FMVSS 302, ISO 3795</i>	≤ 100	mm/min
1.4. Adhesion	<i>DIN 53357</i>	Min 5	N/5cm
2. FORI PU foam low emission high air permeable / reticulated			
2.1 Density of block	DIN EN ISO 845	28-50	kg/m ³
2.2 Compression set	ISO 1856	< 10	%
2.3 Compression stress at 40%	ISO 3386-1	3,2-5	kPa
2.4 Tensile strength	ISO 1798	Min 100	kPa
2.5 Elongation	ISO 1798	Min 100	%
2.6 Flammability CC	FMVSS 302	≤ 100	mm/min

2.8 Air permeability Very high or very low-barrier	ISO 9237 20cm2 / 200Pa	Min 1000	l/dm2/min
2.7 Colour		Dark grey – antrazite / grey	
3. Fori scrim LOOP			
3.1 Weight	ISO 12127	60-80	g/m2
3.2 Composition		PA or PES	
3.3 Application		For HOOK	
3.4 Colour		white	
4. FORIFIX stabiliser / elongation stopper with glue			
4.1 Weight	ISO 12127	65+/-5	g/m2
4.2 Composition		PES or mix fibers	
4.2 Structure		Knitting /raschel fabric	
		Web glue / Powder glue	
USE with hook :			
HOOK selfadhesive for sticking on seat mould foam			
Code :010652			
1.Weight	ISO 3801	500-700	g/m2
2.Thickness	ISO 5084	1,0+/-0,3	mm
3.Structure		Different mashroom type	
4.Width	ISO 3932	Max 330	mm
5.Separating force loop-hook	ISO 53357	Min 4	N/5cm
6.Composition		PA	
7.Colour		Black	

Technical Specification

Product name:	CAR LA PP foam + A-FACE Dekor
PN CAR LA code:	MB010900
Description:	PP (POLYPROPYLEN FOAM) LAMINATED WITH A-FACE FABRIC
Application:	For thermoforming parts
OEM:	Mercedes

PROPERTY	Standard/ Metod	Value with tolerances	Unit
1.0. Product			
1.1. Weight	<i>ISO 3801</i>	238+/-10	g/m ²
1.2. Thickness	<i>ISO 5084</i>	2,2+/-0,2	mm
1.3. Width	<i>ISO 22198</i>	1000-1800	mm
1.4. Flammability	<i>FMVSS 302, ISO 3795</i>	≤ 100	mm/min
1.5. Adhesion	<i>DIN 53357</i>	≥ 10	N/5cm
2. FORI PP foam			
2.1 Density of the block	DIN EN ISO 845	48-65	kg/m ³
2.2 Tensile strength at 23°C	ISO 1926	MD 1400+/-400 CD 1000+/-200	kPa
2.3 Tensile strength at 120°C	ISO 1926	MD 500+/-150 CD 270+/-80	kPa
2.4 Compression set at 50%	ISO 1856	25+/-5	%
2.5 Compression stress at 50%	ISO 3386-1	190+/-60	kPa

PROPERTY	Standard/ Metod	Value with tolerances	Unit
2.6 Elongation at break at 23°C	ISO 1926	MD 250+/-70 CD 250+/-70	%
2.7 Elongation at break at 120°C	ISO 1926	MD 370+/-110 CD 360+/-110	%
2.8 Flammability	FMVSS 302	≤ 100	mm/min
2.9 Color		GREY	
2.10 Temperature resistance		-5 to 130	°C
2.11 Stability at 190°C 1.min		MD -25 +/-10 CD 0+/-5	%
2.12 Vacuum		H/D ratio 0,6	
2.13 Emissions			
Fogging	DIN 75201-B	0,5	Mg
VOC	VDA 278	≤ 100	ppm
Fog	VDA 278	≤ 250	ppm
3. A-FACE FABRIC			
3.1 Weight	ISO 12127	125	g/m ²
3.2 Composition		PES-100 recycled	%
3.3 Colour		Black	

Technical Specification

Product name:	CAR LA thermoadhesive FORIFIX laminates
PN CAR LA code:	
Description:	PU foam laminates scrim BI-DIRECTIONAL and FORIFIX stabilizer, elongation stopper and glue (web film or powder glue)
Application:	For leather parts / good behavior
OEM:	Porsche

PROPERTY	Standard/ Metod	Value with tolerances	Unit
1.0. Product			
1.1. Thickness	<i>ISO 5084</i>	2,0-10	mm
1.2. Width	<i>ISO 22198</i>	1000-1800	mm
1.3. Flammability	<i>FMVSS 302, ISO 3795</i>	≤ 100	mm/min
1.4. Adhesion	<i>DIN 53357</i>	Min 5	N/5cm
2. FORI PU foam low emission standard STD or high air permeable / reticulated			
2.1 Density of block	DIN EN ISO 845	28-50	kg/m ³
2.2 Compression set	ISO 1856	< 10	%
2.3 Compression stress at 40%	ISO 3386-1	3,2-5	kPa
2.4 Tensile strength	ISO 1798	Min 100	kPa
2.5 Elongation	ISO 1798	Min 100	%
2.6 Flammability	FMVSS 302	≤ 100	mm/min

2.7 Air permeability Very high or very low-barrier	ISO 9237 20cm ² / 200Pa	Min 1000	l/dm ² /min
2.8 Colour		Dark grey – antrazite / grey	
3. Fori scrim BI-DIRECTIONAL			
3.1 Weight	ISO 12127	30-45	g/m ²
3.2 Composition		PA-polyamide	
3.3 Type knitting		Circular	
3.4 Pattern knitting		bi-directional	
4. FORIFIX stabiliser / elongation stopper			
4.1 Weight	ISO 12127	65+/-5	g/m ²
4.2 Composition		PES	
4.2 Structure		Knitting PES	
		Web glue Co PA	

Technical Specification

Product name:	CAR LA BIO FOAM LAMINATES
PN CAR LA code:	RK011069
Description:	Fori PU BIO Foam laminated with Fori scrim and Fori thermoadhesive webfilm
Application:	Leather parts
OEM:	Bentley

PROPERTY	Standard/ Metod	Value with tolerances	Unit
1.0. Product			
1.1. Thickness	ISO 5084	2,0 -15,0	Mm
1.2. Width	ISO 3932	Max 1800	mm
1.3. Flammability	FMVSS 302, TL 1010	≤ 100	mm/min
1.4 Adhesion foam - scrim	DIN 53357	Min 3	N/5cm
2. FORI BIO PUR foam high air permeable /retic.			
2.1 Density of the block	DIN EN ISO 845	35± 2	kg/m ³
2.2 Compression stress value at 40%	DIN EN ISO 3386/1	3,8-5,8	kPa
2.3 Compression set	DIN EN ISO 3386/1	≤ 10	%
2.4 Tensile strength	DIN EN ISO 1798	min 90	kPa
2.5 Elongation	DIN EN ISO 1798	min 100	%

PROPERTY	Standard/ Metod	Value with tolerances	Unit
2.6 Flammability CC	FMVSS 302, TL1010	≤ 100	mm/min
2.7 Color	DIN 75201 B	Grey	-
2.8 Fogging	DIN 75201 B	< 1	mg
2.9 Sustainable content	-	~ 26	%
2.10 Bio-based carbon content	ASTM D6866-21 Method B	31	%
3. FORI scrim			
3.1 Weight	ISO 3801	15-80	g/m ²
3.2 Composition		100-PES or PA	%
3.3 Colour		white / black	
4.FORI THERMOADHESIVE WEB FILM			
4.1 Weight	ISO 3801	Min 16	g/m ²
4.2 Composition		100-CoPA or CoPES	%
4.3 Melting range	Kofler	Min 85	°C

Technical Specification

Product name:	CAR LA THERMOFORM laminates and parts
PN CAR LA code:	
Description:	Fori needle punched nonwovens polyester / bico PES composites Sustainable MONO LAMINATES, only PES Polyester composition
Application:	Thermoformed parts
OEM:	Mercedes

PROPERTY	Standard/ Metod	Value with tolerances	Unit
1.0. Product			
1.1. Thickness	ISO 9073	3,0-10	mm
1.2. Weight	ISO 9073	300-1500	g/m ²
1.3. Flammability CC	FMVSS 302	≤ 100	mm/min
2. FORI nonwoven needle punched			
2.1 Weight	ISO 9073	100-200	g/m ²
2.2 Composition		PES Polyester recycled	
3. FORI nonwoven needle punched form			
3.1 Weight	ISO 9073	300-1200	
3.2 Composition		PES Polyester bico	



Sustainable



Lamination more than 65 years

PROPERTY	Standard/ Metod	Value with tolerances	Unit
4. FORI face material on one side is an option , defined by OEM			
5. Final Thermoformed parts could be produced in Fori group			



Technical Specification

Product name:	CAR LA MONO PES laminates thermoadhesive
PN CAR LA code:	
Description:	This product is a substitute / alternative for foam laminate Fori needle punched nonwovens polyester multiknit laminated glue (web or powder) Sustainable MONO LAMINATES, only PES Polyester composition
Application:	Leather covers, leather lamination
OEM:	Mercedes,..

PROPERTY	Standard/ Metod	Value with tolerances	Unit
1.0. Product			
1.1. Thickness	ISO 9073	3,0-8,0	mm
1.2. Adhesion		Fiber tearing	
1.3. Flammability CC	FMVSS 302	≤ 100	mm/min
2. FORI nonwoven needle punched stitch multiknit			
2.1 Weight	ISO 9073	100-200	g/m ²
2.2 Composition		PES Polyester	
3. FORI nonwoven needle punched felt			
3.1 Weight	ISO 9073	200-300	g/m ²
3.2 Composition		PES Polyester	

PROPERTY	Standard/ Metod	Value with tolerances	Unit
4. FORI web glue			
4.1 Composition		Co PES	
4.2 Weight	ISO 3801	20-35	g/m ²
4.3 Melting range	Kofler	80-170	°C
OR			
4.FORI thermoadhesive powder glue			
4.1 Composition		PES	
4.2 Weight	ISO 3801	25-90	g/m ²
4.3 Melting range	Kofler	90-130	°C

Technical Specification

Product name:	CAR LA mesh spacer laminates – mono
PN CAR LA code:	
Description:	This product is a substitute / alternative for foam laminate Fori mesh spacer laminated web glue Sustainable MONO LAMINATES, only PES Polyester composition
Application:	Leather covers, leather lamination / clima / ventilation / heating
OEM:	Mercedes, Audi..

PROPERTY	Standard/ Metod	Value with tolerances	Unit
1.0. Product			
1.1. Thickness	ISO 9073	3,0-12,0	mm
1.2. Adhesion		Web fiber tearing	
1.3. Flammability CC	FMVSS 302	≤ 100	mm/min
2. FORI mesh spacer			
2.1 Thickness	ISO 5084	4,0-12,0	mm
2.2 Composition		PES Polyester	
2.3 Structure		One side open structure, other side close structure	

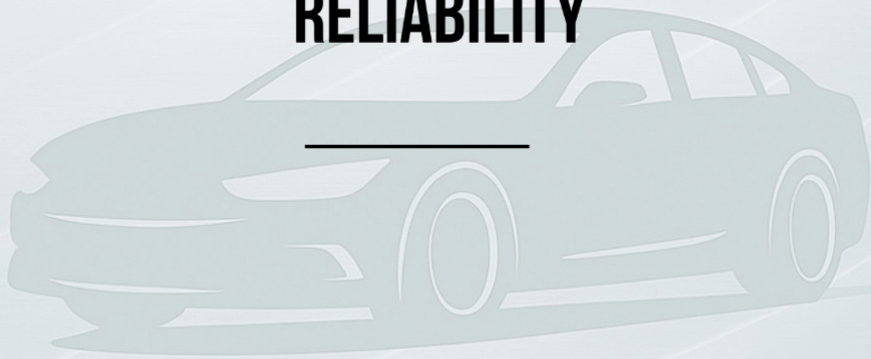
2.4 Colour		Black-black-black or white-black-bleak depends of needs	
2.5 Air permeability	ISO 9237 20cm2 200Pa	Min 2000	l/dm2(min)
2.5 Hardness	ISO 3386-1	Soft to hard 3,0-16	kPa
3. FORI web glue			
3.1 Composition		Co PES	
3 2 Weight	ISO 3801	20-35	g/m2
3.3 Melting range	Kofler	75-105	°C

SUSTAINABILITY



04.

**RECOGNITION AND
RELIABILITY**



**CAR LA
Laminates**

SUSTAINABILITY

At Fori Group, sustainability is not just a responsibility — it's a strategic priority. Our Corporate Sustainability Program is built around key pillars:

Recyclable Inputs

From a materials standpoint, we have set environmental targets that promote the use of more sustainable and recyclable inputs.



This includes a shift toward environmentally friendly and recycled materials, such as monomaterial PES laminates that enable 100% recyclability, and replacing conventional film with recycled film.

ISO 45001 & ISO 50001

We are also in the process of implementing ISO 45001 and ISO 50001 management systems.



The latter is particularly aligned with our goal of reducing carbon emissions and enhancing energy performance, including the potential replacement of outdated machinery with more energy-efficient alternatives.

Life Cycle Assessment

We have already conducted a Life Cycle Assessment (LCA) for our average product, and we plan to expand this by calculating and verifying LCAs for each individual product as well.



Solar Panels Installation

A major future project is the installation of solar panels, scheduled for 2026, which will significantly contribute to our use of renewable energy sources.



Digitalization

We continuously invest in digital technologies to optimize production processes, improve traceability, and enhance customer experience.



CERTIFICATES

- ISO 9001 – Quality Management System
- IATF 16949:2016 – International Automotive Task Force
- ISO 14001 – Environmental Management Systems
- ISO 50001 – Energy Management
- ISO 45001 - Occupational Health and Safety Management Systems
- EcoVadis



REFERENCES

At CAR LA Laminates, the automotive unit of FORI Group's Technical Textile Division, we are proud to be a trusted partner to many of the world's leading automotive brands:

- Magna
- Yanfeng
- Conceria Pasubio
- Adient
- Carpenter Co.
- Trèves Group
- Rino Mastrotto Group
- Gruppo Dani
- BOS Automotive
- Bader Leather
- Mario Levi Group
- Coindu
- Dinamica (Miko)
- Aunde Group
- Gentherm
- Lear Corporation
- Faurecia (Forvia)
- Boxmark Leather
- Eagle Ottawa Leather (Lear)
- Valmet Automotive
- Clerprem S.p.A.
- Autins Group

LET'S STAY CONNECTED



e-catalogue
CAR LA laminates



www.forigroup.com



CONTACT US



+386 5 330 5140 (SI)



info@forigroup.com



www.forigroup.com

Thank you for taking the time to explore our catalogue.

For product inquiries or custom orders, please contact us.